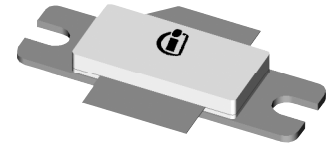


## Thermally-Enhanced High Power RF LDMOS FETs 150 W, 864 – 900 MHz

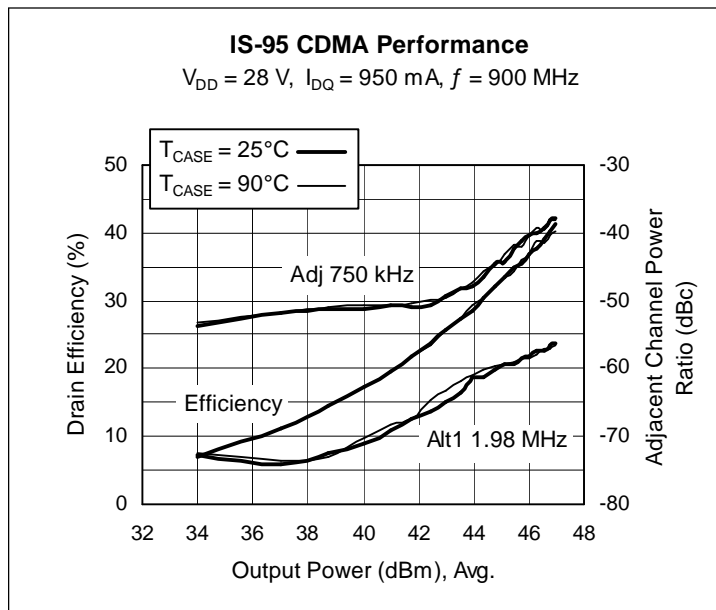
### Description

The PTFA081501E and PTFA081501F are thermally-enhanced, 150-watt, internally matched *GOLDMOS*<sup>®</sup> FETs intended for ultra-linear applications. They are characterized for CDMA and CDMA2000 operation from 864 to 900 MHz. Thermally-enhanced packages provide the coolest operation available. Full gold metallization ensures excellent device lifetime and reliability.

PTFA081501E  
 Package H-30248-2



PTFA081501F  
 Package H-31248-2



### Features

- Thermally-enhanced packages, Pb-free and RoHS-compliant
- Broadband internal matching
- Typical CDMA2000 performance at 900 MHz, 28 V
  - Average output power = 35 W
  - Linear Gain = 18 dB
  - Efficiency = 34%
  - Adjacent channel power = -50 dBc
- Typical CW performance, 900 MHz, 28 V
  - Output power at P-1dB = 165 W
  - Efficiency = 62%
- Integrated ESD protection: Human Body Model, Class 2 (minimum)
- Excellent thermal stability, low HCI drift
- Capable of handling 10:1 VSWR @ 28 V, 170 W (CW) output power

### RF Characteristics

**CDMA2000 3-Carrier Measurements** (not subject to production test—verified by design/characterization in Infineon test fixture)

$V_{DD} = 28\text{ V}$ ,  $I_{DQ} = 950\text{ mA}$ ,  $P_{OUT} = 35\text{ W}$  average,  $f = 900\text{ MHz}$

Characteristic	Symbol	Min	Typ	Max	Unit
Gain	$G_{ps}$	—	18	—	dB
Drain Efficiency	$\eta_D$	—	34	—	%
Adjacent Channel Power Ratio	ACPR	—	-50	—	dBc

All published data at  $T_{CASE} = 25^\circ\text{C}$  unless otherwise indicated

**ESD:** Electrostatic discharge sensitive device—observe handling precautions!

## RF Characteristics (cont.)

### Two-tone Measurements (tested in Infineon test fixture)

$V_{DD} = 28\text{ V}$ ,  $I_{DQ} = 950\text{ mA}$ ,  $P_{OUT} = 150\text{ W PEP}$ ,  $f = 900\text{ MHz}$ , tone spacing = 1 MHz

Characteristic	Symbol	Min	Typ	Max	Unit
Gain	$G_{ps}$	17	18	—	dB
Drain Efficiency	$\eta_D$	44	46	—	%
Intermodulation Distortion	IMD	—	-30	-28	dBc

## DC Characteristics

Characteristic	Conditions	Symbol	Min	Typ	Max	Unit
Drain-Source Breakdown Voltage	$V_{GS} = 0\text{ V}$ , $I_{DS} = 10\text{ mA}$	$V_{(BR)DSS}$	65	—	—	V
Drain Leakage Current	$V_{DS} = 28\text{ V}$ , $V_{GS} = 0\text{ V}$	$I_{DSS}$	—	—	1.0	$\mu\text{A}$
	$V_{DS} = 63\text{ V}$ , $V_{GS} = 0\text{ V}$	$I_{DSS}$	—	—	10.0	$\mu\text{A}$
On-State Resistance	$V_{GS} = 10\text{ V}$ , $V_{DS} = 0.1\text{ V}$	$R_{DS(on)}$	—	0.07	—	$\Omega$
Operating Gate Voltage	$V_{DS} = 28\text{ V}$ , $I_{DQ} = 950\text{ mA}$	$V_{GS}$	2.0	2.48	3.0	V
Gate Leakage Current	$V_{GS} = 10\text{ V}$ , $V_{DS} = 0\text{ V}$	$I_{GSS}$	—	—	1.0	$\mu\text{A}$

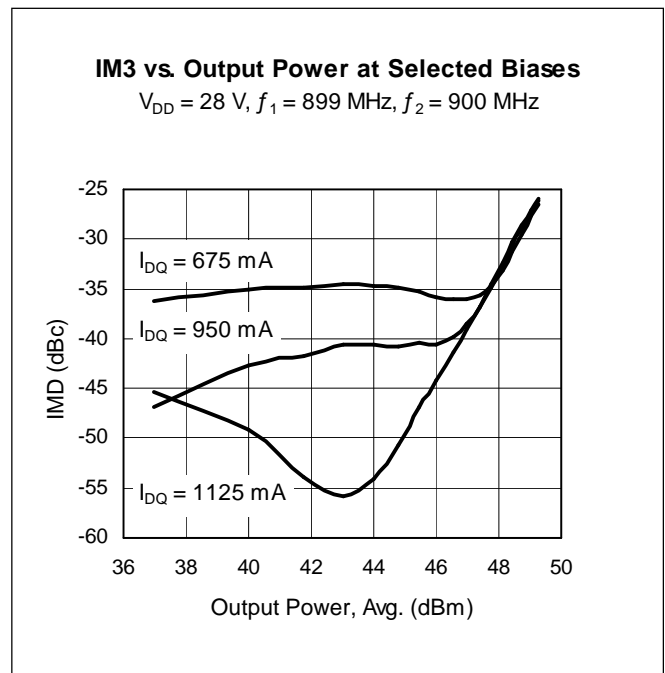
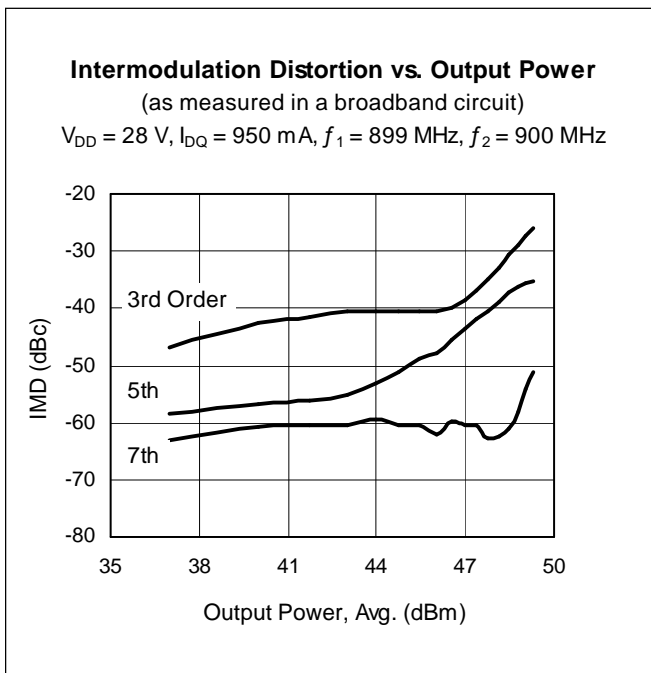
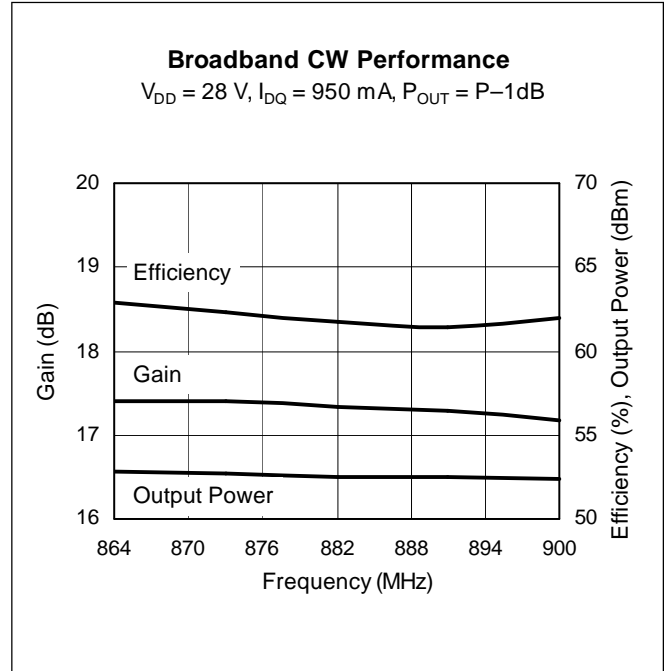
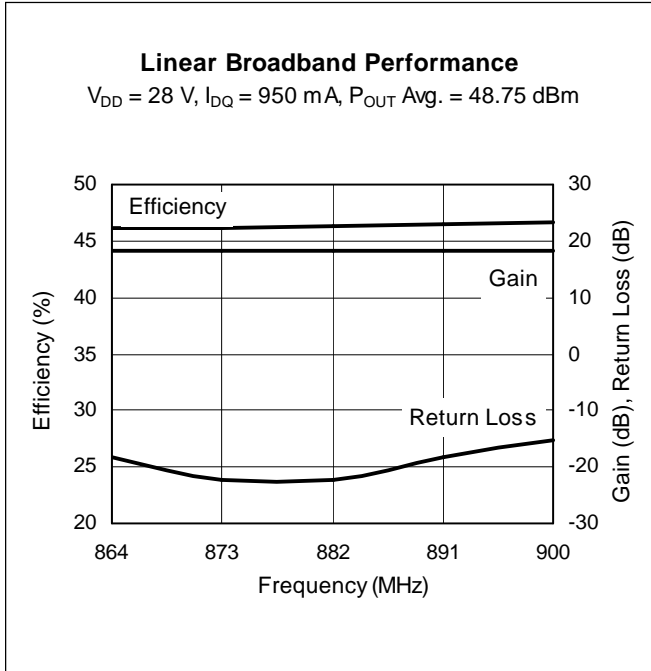
## Maximum Ratings

Parameter	Symbol	Value	Unit
Drain-Source Voltage	$V_{DSS}$	65	V
Gate-Source Voltage	$V_{GS}$	-0.5 to +12	V
Junction Temperature	$T_J$	200	$^{\circ}\text{C}$
Total Device Dissipation	$P_D$	449	W
		Above 25 $^{\circ}\text{C}$ derate by	2.56
Storage Temperature Range	$T_{STG}$	-40 to +150	$^{\circ}\text{C}$
Thermal Resistance ( $T_{CASE} = 70^{\circ}\text{C}$ , 150 W CW)	$R_{\theta JC}$	0.39	$^{\circ}\text{C/W}$

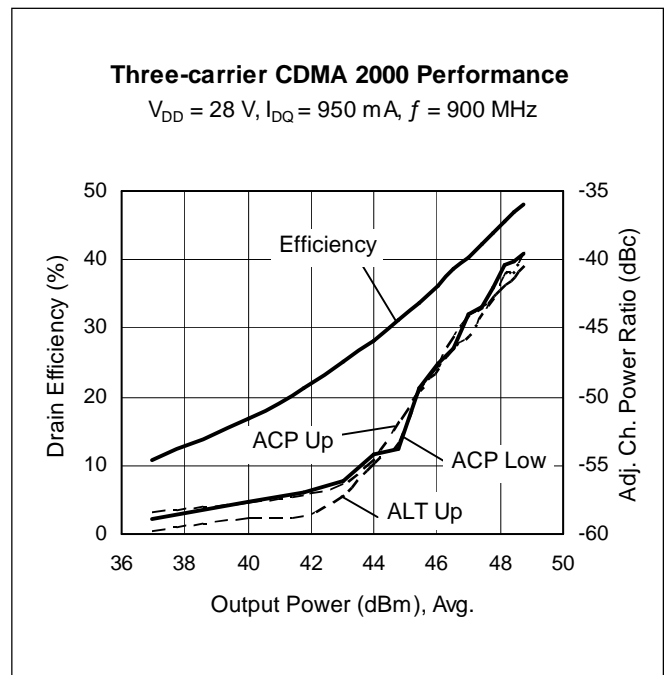
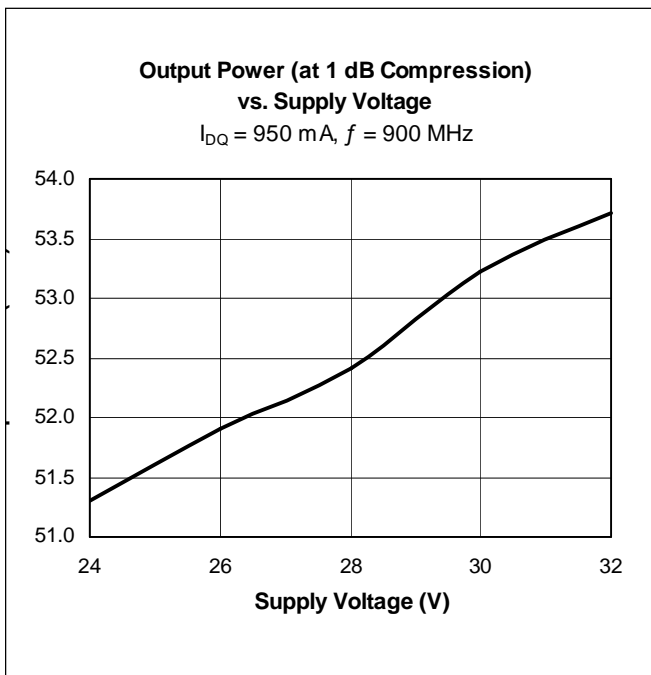
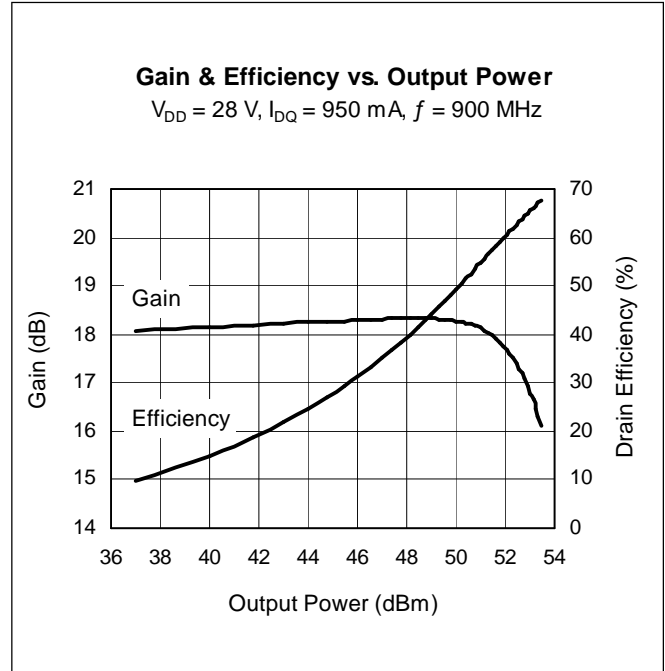
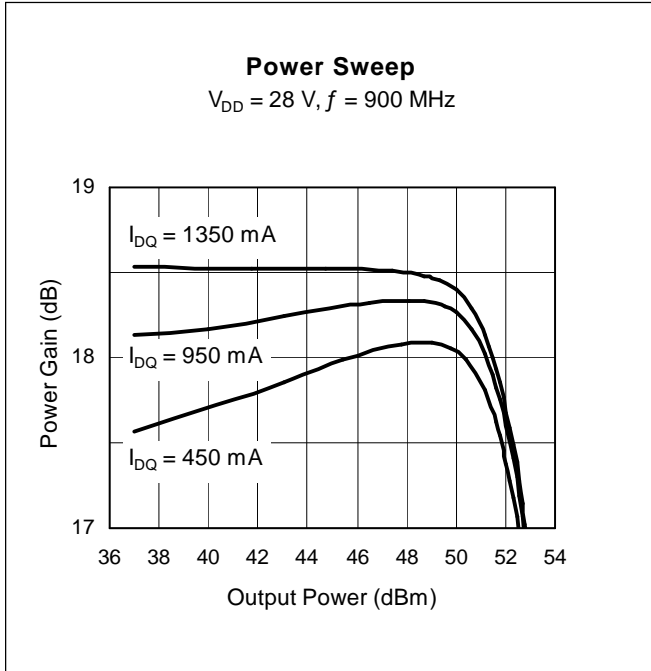
## Ordering Information

Type	Package Outline	Package Description	Marking
PTFA081501E	H-30248-2	Thermally-enhanced slotted flange, single-ended	PTFA081501E
PTFA081501F	H-31248-2	Thermally-enhanced earless flange, single-ended	PTFA081501F

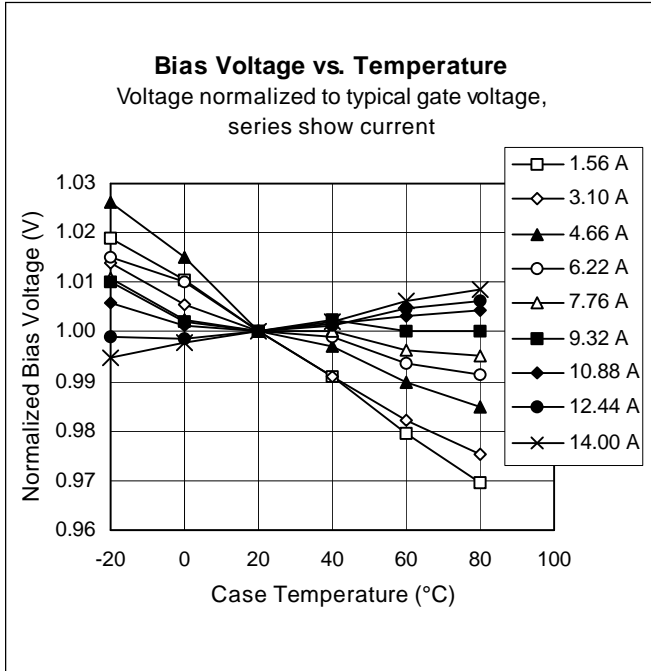
**Typical Performance** (data taken in a production test fixture)



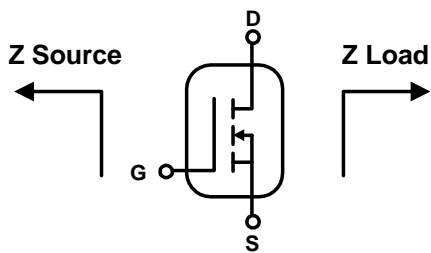
Typical Performance (cont.)



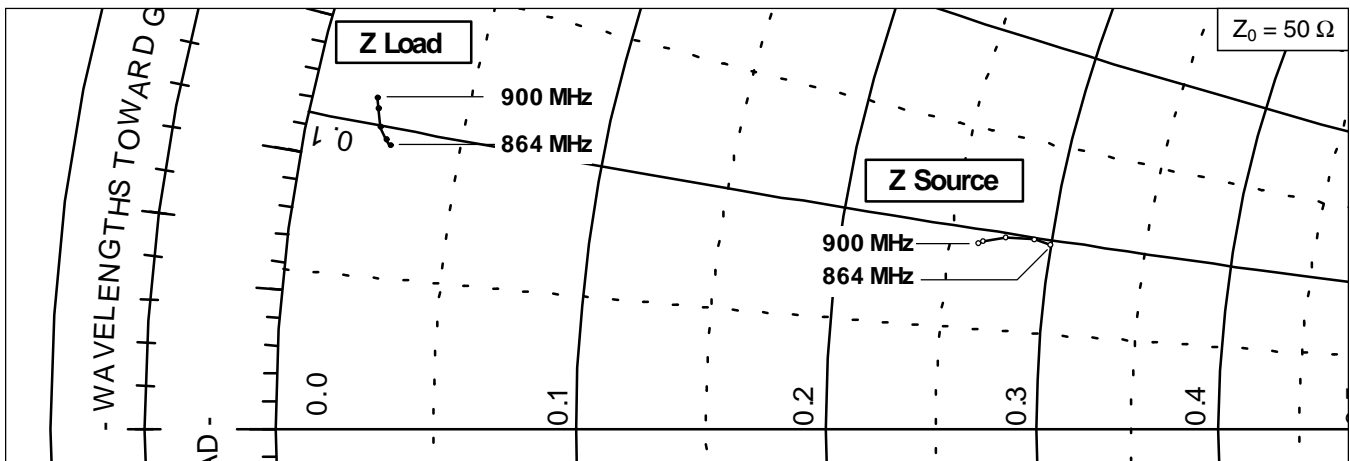
Typical Performance (cont.)



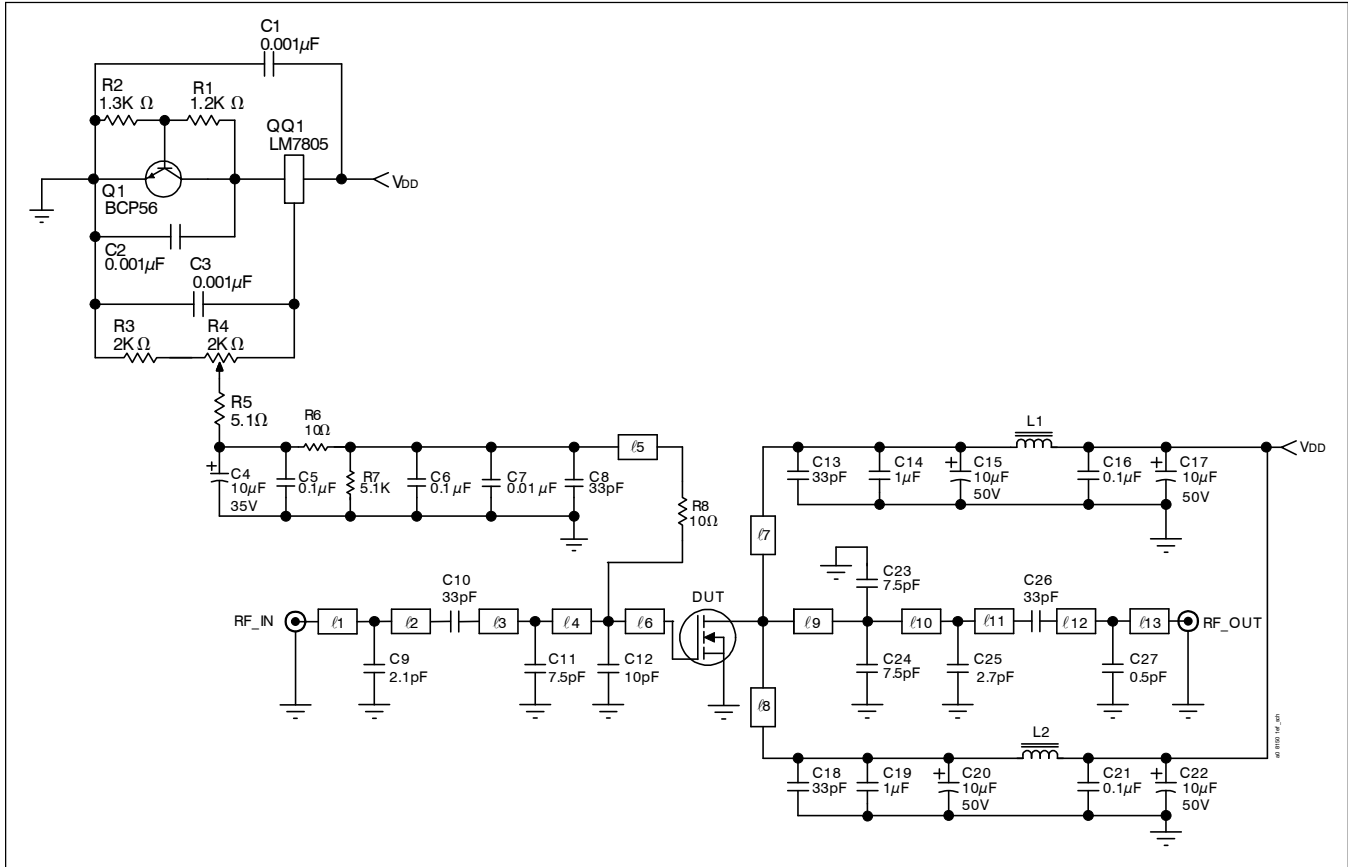
Broadband Circuit Impedance



Frequency MHz	Z Source W		Z Load W	
	R	jX	R	jX
864	13.20	4.69	1.35	4.73
873	13.30	4.75	1.28	4.80
882	13.85	4.94	1.14	4.99
891	14.59	5.00	1.06	5.27
900	15.01	4.91	1.01	5.43



### Reference Circuit



Reference circuit block diagram for  $f = 900 \text{ MHz}$

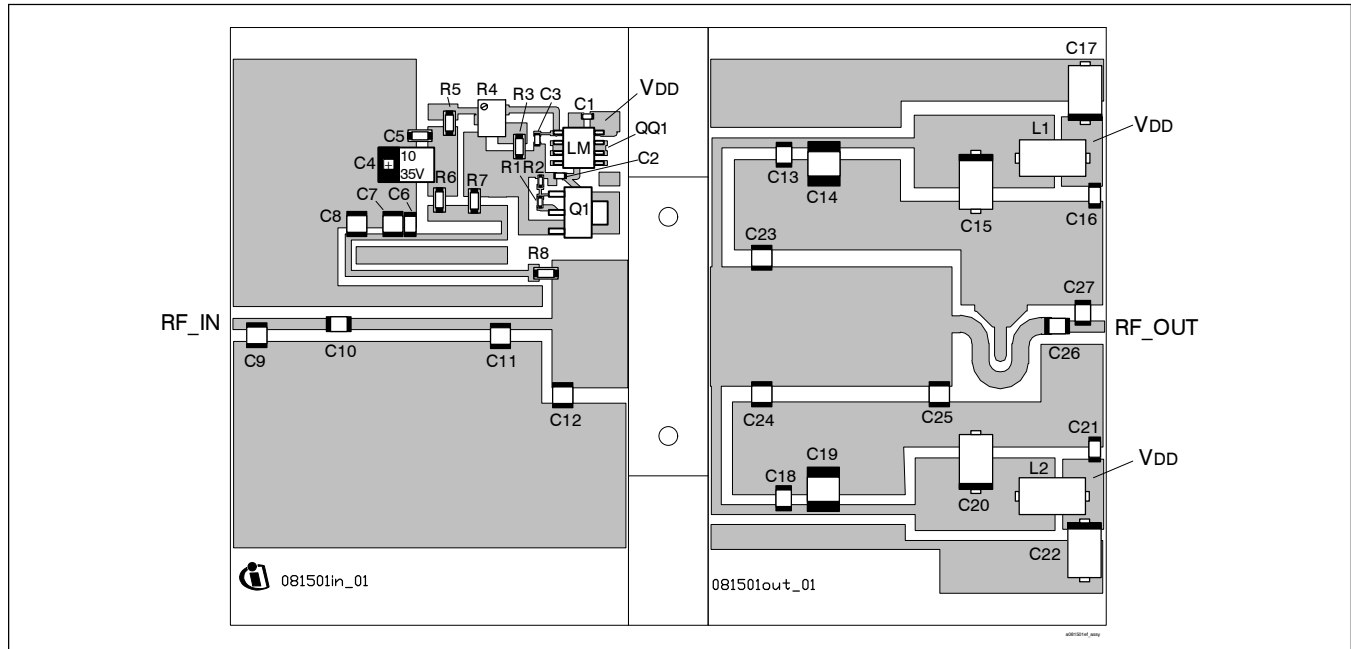
### Circuit Assembly Information

DUT	PTFA081501E or PTFA081501F	LDMOS Transistor	
PCB	0.76 mm [.030"] thick, $\epsilon_r = 4.5$	Rogers TMM4	2 oz. copper

Microstrip	Electrical Characteristics at 900 MHz <sup>1</sup>	Dimensions: L x W (mm)	Dimensions: L x W (in.)
l1	0.016 $\lambda$ , 50.0 $\Omega$	2.90 x 1.35	0.114 x 0.053
l2	0.053 $\lambda$ , 50.0 $\Omega$	9.40 x 1.35	0.370 x 0.053
l3	0.102 $\lambda$ , 50.0 $\Omega$	18.29 x 1.35	0.720 x 0.053
l4	0.045 $\lambda$ , 50.0 $\Omega$	8.10 x 1.35	0.319 x 0.053
l5	0.153 $\lambda$ , 68.0 $\Omega$	27.43 x 0.76	1.080 x 0.030
l6	0.058 $\lambda$ , 7.5 $\Omega$	9.40 x 16.26	0.370 x 0.640
l7, l8	0.125 $\lambda$ , 50.0 $\Omega$	22.61 x 1.27	0.890 x 0.050
l9	0.036 $\lambda$ , 7.9 $\Omega$	5.72 x 15.24	0.225 x 0.600
l10	0.141 $\lambda$ , 7.9 $\Omega$	22.61 x 15.24	0.890 x 0.600
l11	0.149 $\lambda$ , 38.0 $\Omega$	26.16 x 2.16	1.030 x 0.085
l12, l13	0.013 $\lambda$ , 50.0 $\Omega$	2.29 x 1.35	0.090 x 0.053

<sup>1</sup>Electrical characteristics are rounded.

Reference Circuit (cont.)

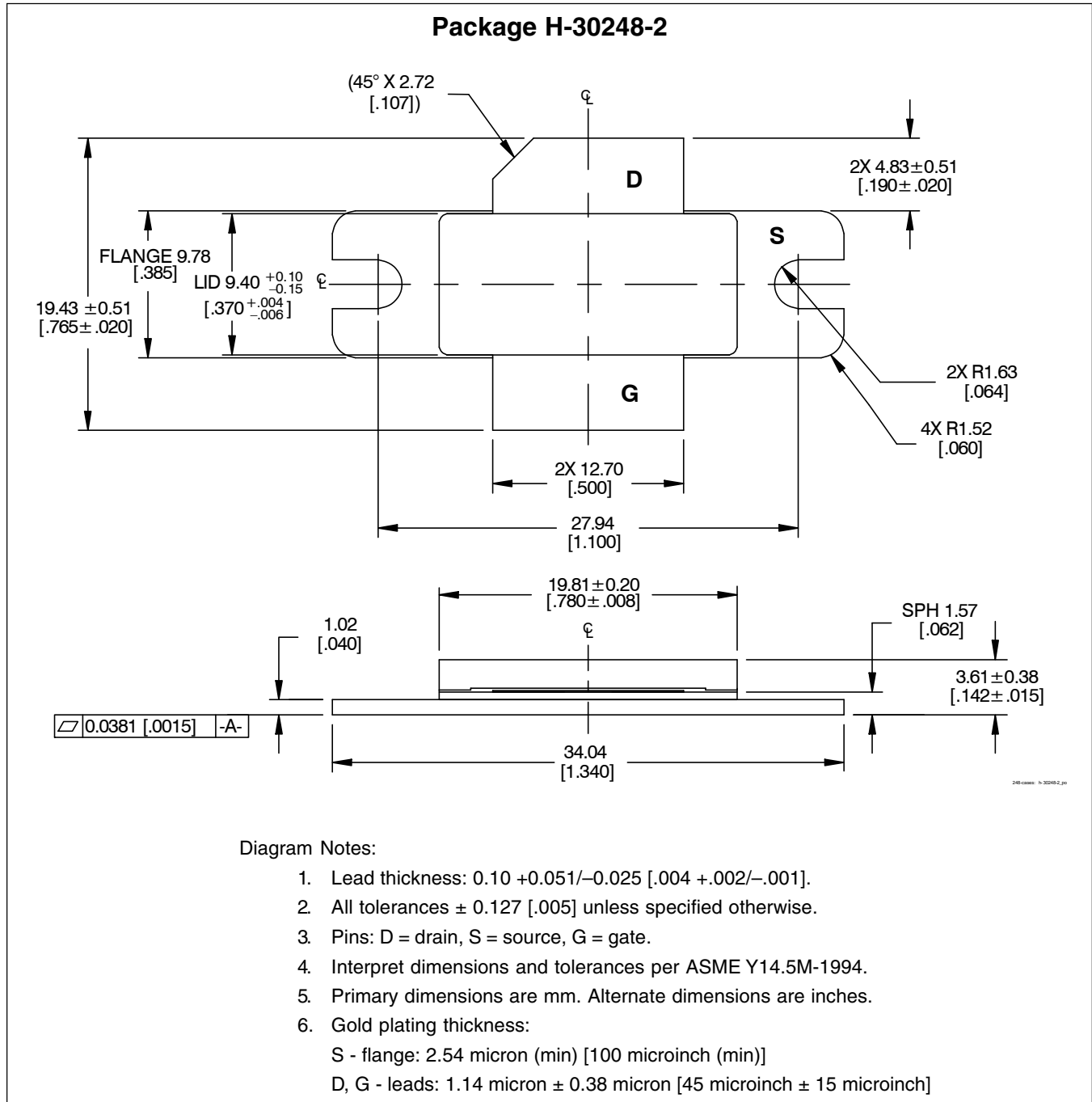


Reference circuit assembly diagram (not to scale)\*

Component	Description	Suggested Manufacturer	P/N or Comment
C1, C2, C3	Capacitor, 0.001 $\mu$ F	Digi-Key	PCC1772CT-ND
C4	Tantalum capacitor, 10 $\mu$ F, 35 V	Digi-Key	PCS6106TR-ND
C5, C6, C16, C21	Capacitor, 0.1 $\mu$ F, 50 V	Digi-Key	P4525-ND
C7	Capacitor, 0.01 $\mu$ F	Digi-Key	200B 103
C8, C10, C13, C18, C26	Ceramic capacitor, 33 pF	ATC	100B 330
C9	Ceramic capacitor, 2.1 pF	ATC	100B 2R1
C11, C23, C24	Ceramic capacitor, 7.5 pF	ATC	100B 7R5
C12	Ceramic capacitor, 10 pF	ATC	100B 100
C14, C19	Capacitor, 1.0 $\mu$ F	ATC	920C105
C15, C17, C20, C22	Tantalum capacitor, 10 $\mu$ F, 50 V	Garrett Electronics	TPS106K050R0400
C25	Ceramic capacitor, 2.7 pF	ATC	100B 2R7
C27	Ceramic capacitor, 0.5 pF	ATC	100B 0R5
L1, L2	Ferrite, 6 mm	Ferroxcube	53/3/4.6-452
Q1	Transistor	Infineon	BCP56
QQ1	Voltage regulator	National Semiconductor	LM7805
R1	Chip resistor, 1.2 k-ohms	Digi-Key	P1.2KGCT-ND
R2	Chip resistor, 1.3 k-ohms	Digi-Key	P1.3KGCT-ND
R3	Chip resistor, 2 k-ohms	Digi-Key	P2KECT-ND
R4	Potentiometer, 2 k-ohms	Digi-Key	3224W-202ETR-ND
R5, R7	Chip resistor, 5.1 k-ohms	Digi-Key	P5.1KECT-ND
R6, R8	Chip resistor, 10 ohms	Digi-Key	P10ECT-ND

\*Gerber Files for this circuit available on request

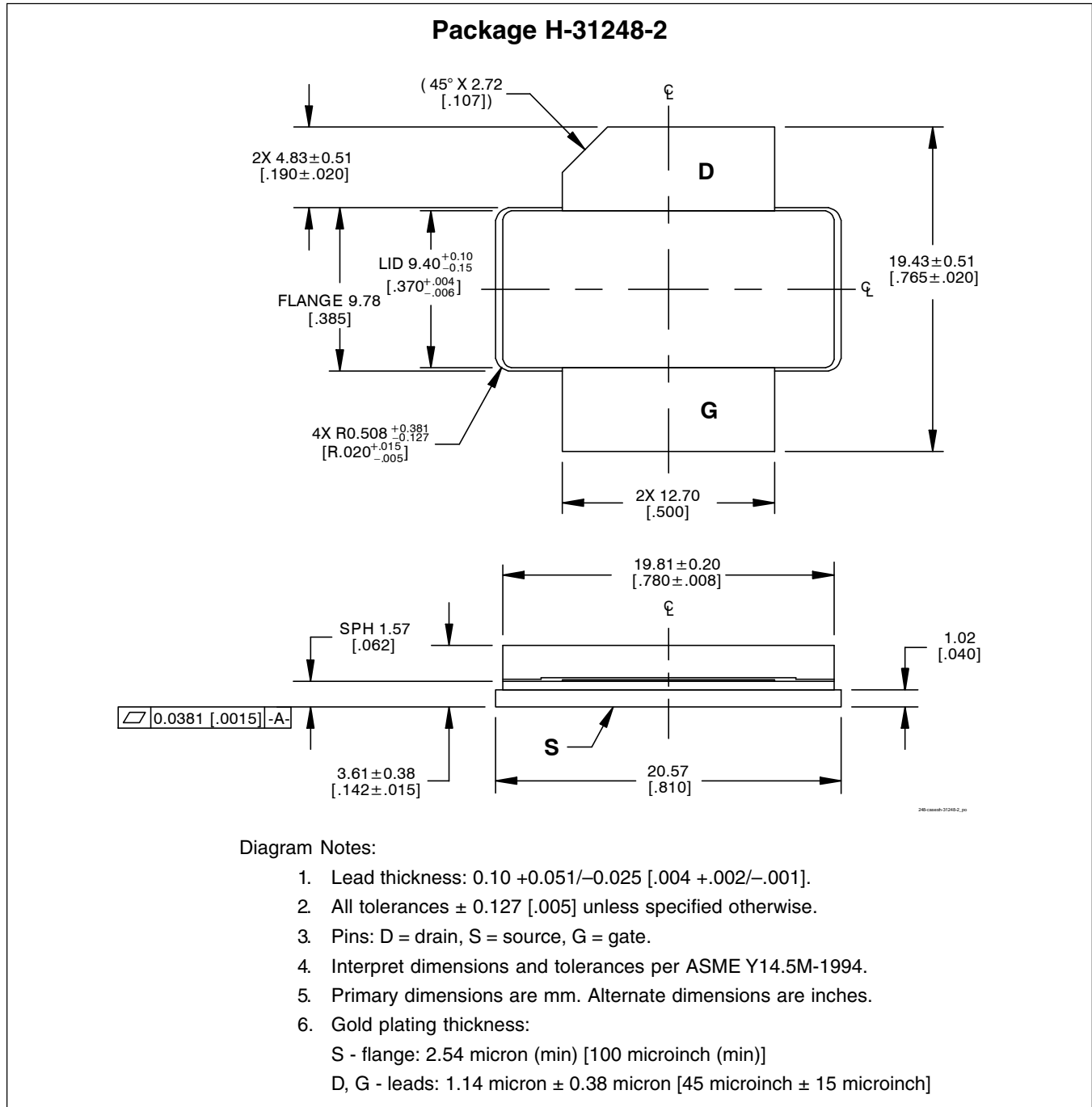
## Package Outline Specifications



Find the latest and most complete information about products and packaging at the Infineon Internet page  
<http://www.infineon.com/products>



Package Outline Specifications (cont.)



Find the latest and most complete information about products and packaging at the Infineon Internet page <http://www.infineon.com/products>

**PTFA081501E/F****Confidential, Limited Internal Distribution****Revision History: 2007-03-09**

Data Sheet

Previous Version: 2005-07-20, Data Sheet

Page	Subjects (major changes since last revision)
all	Update Infineon information and logo.
1	Add information about RoHS compliance.
1, 2, 9	Show PTFA081501F as a released products
1, 2, 8, 9	Revise package designations and diagrams.

**We Listen to Your Comments**

Any information within this document that you feel is wrong, unclear or missing at all?

Your feedback will help us to continuously improve the quality of this document.

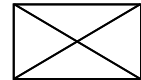
Please send your proposal (including a reference to this document) to:

[highpowerRF@infineon.com](mailto:highpowerRF@infineon.com)

To request other information, contact us at:

+1 877 465 3667 (1-877-GO-LDMOS) USA

or +1 408 776 0600 International



*GOLDMOS*<sup>®</sup> is a registered trademark of Infineon Technologies AG.

**Edition 2007-03-09****Published by****Infineon Technologies AG****81726 München, Germany****© Infineon Technologies AG 2005.****All Rights Reserved.****Legal Disclaimer**

The information given in this document shall in no event be regarded as a guarantee of conditions or characteristics ("Beschaffenhheitsgarantie"). With respect to any examples or hints given herein, any typical values stated herein and/or any information regarding the application of the device, Infineon Technologies hereby disclaims any and all warranties and liabilities of any kind, including without limitation warranties of non-infringement of intellectual property rights of any third party.

**Information**

For further information on technology, delivery terms and conditions and prices please contact your nearest Infineon Technologies Office ([www.infineon.com/rfpower](http://www.infineon.com/rfpower)).

**Warnings**

Due to technical requirements components may contain dangerous substances. For information on the types in question please contact your nearest Infineon Technologies Office.

Infineon Technologies Components may only be used in life-support devices or systems with the express written approval of Infineon Technologies, if a failure of such components can reasonably be expected to cause the failure of that life-support device or system, or to affect the safety or effectiveness of that device or system. Life support devices or systems are intended to be implanted in the human body, or to support and/or maintain and sustain and/or protect human life. If they fail, it is reasonable to assume that the health of the user or other persons may be endangered.