

INTRODUCTION

Molex's newest 0.40mm pitch SlimStack connectors feature the smallest width in the industry, 2.60mm, for ultra-narrow board-to-board applications.

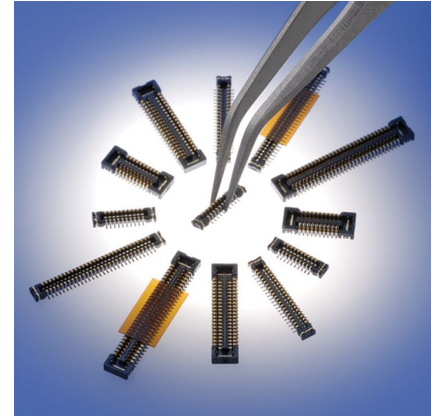
These new connectors are available in various circuit sizes from 20-80. They come standard in embossed tape without vacuum tape, but can also be ordered with vacuum tape if needed.

Along with the smallest width dimension in the industry, these miniature connectors also include some of the smallest overall dimensions.

These narrow-width versions are designed to accommodate the continuing down-sizing of mobile phones and other mobile devices. These connectors offer many features to help designers reduce space and maintain secure electrical and mechanical contact reliability.



0.40mm (.016") Pitch SlimStack™ SMT Board-to-Board Connectors, with Ultra-Narrow 2.60mm (.102") Width



Specifications:

- Current: 0.3A
- Voltage: 50V
- Contact Plating: Gold
- Contact Resistance: 80 milliohms max.
- Insulation Resistance: 100 megohms min.
- Dielectric Strength: 250V AC
- Operating Temperature: -20 to +85°C
- Flammability: UL 94V-0
- Durability: 30 cycles

Features

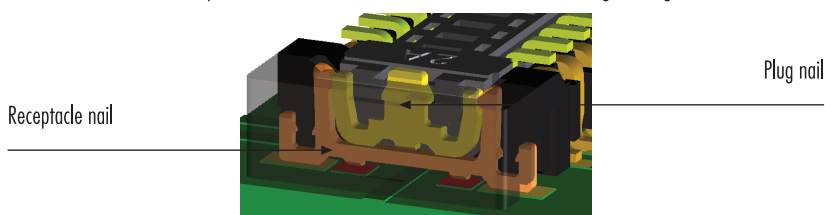
- Ultra-narrow width, low profile and small pitch
- Bottom housing mold allows for tracing patterns
- Integral end solder/ground tabs
- Longer wipe length versus competitor versions
- Tuning fork terminal and solder tab with friction lock
- Nickel barrier plating

Benefits

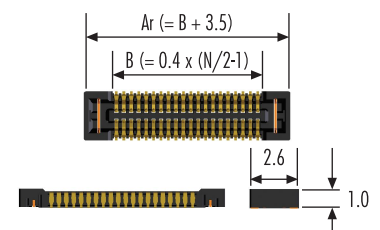
- Space savings for mobile device applications
- Flexible design and space savings
- Secure PCB retention and electrical grounding
- Superior electrical contact reliability
- Secure contact reliability and protection against drop impact
- Prevents solder wicking

Grounding/Fitting Nail Feature

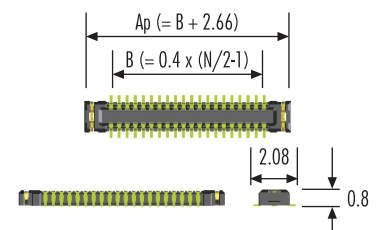
The solder nails positioned on the end of the connector also function as grounding contacts.



502426 Receptable



502430 Plug



N:ckt	Ar	Ap	B
20ckt	7.1	6.26	3.6
40ckt	9.1	8.26	5.6
60ckt	11.1	10.26	7.6
80ckt	13.1	12.26	9.6

unit: mm

MARKETS AND APPLICATIONS

- Mobile phones
- PDAs
- Digital Cameras/Camcorders
- Other Mobile Devices





0.40mm (.016") Pitch SlimStack™ SMT Board- to-Board Connectors, with Ultra-Narrow 2.60mm (.102") Width

Plug

Order Number	Circuits	Height	Width
502430-2010	20	1.00mm	2.60mm
502430-2610	26		
502430-3210	32		
502430-4010	40		
502430-5010	50		
502430-6010	60		
502430-6410	64		
502430-8010	80		

Receptable

Order Number	Circuits	Height	Width
502426-2010	20	1.00mm	2.60mm
502426-2610	26		
502426-3210	32		
502426-4010	40		
502426-5010	50		
502426-6010	60		
502426-6410	64		
502426-8010	80		

Note: All part numbers on this page come standard without vacuum tape. Contact Molex if vacuum tape required. Molex also offers test "checker" versions.

molex[®]
one company > a world of innovation

Americas Headquarters
2222 Wellington Ct,
Lisle, Illinois 60532 USA
Tel: 1-800-78MOLEX
amerinfo@molex.com

Asia Pacific North Headquarters
Yamato, Kanagawa, Japan
Tel: 81-46-265-2325
apninfo@molex.com

Asia Pacific South Headquarters
Jurong, Singapore
Tel: 65-6-268-6868
apsinfo@molex.com

European Headquarters
Munich, Germany
Tel: 49-89-413092-0
euroinfo@molex.com

Corporate Headquarters
2222 Wellington Ct,
Lisle, Illinois 60532 USA
Tel: 630-969-4550

Visit our website at www.molex.com